



Programs for all ages in  
Painting, Drawing, Digital & Film  
Photography, Ceramics and  
Sculpture, Fiber Arts, Jewelry

Changing exhibitions  
in three galleries and  
featuring the Contemporary  
Sculpture Garden.

Main Campus  
600 St. Andrews Boulevard  
Winter Park, Florida 32792  
Tel 407-671-1886  
Fax 407-671-0311  
www.crealde.org

# Field Trip Application Form

School: \_\_\_\_\_

Grade of students: \_\_\_\_\_

Number of students per day (max 50): \_\_\_\_\_

Contact name: \_\_\_\_\_

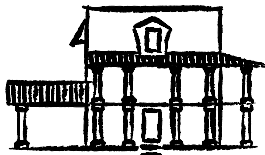
Contact number: \_\_\_\_\_

Contact email: \_\_\_\_\_

1st choice dates (we do not book on Wednesdays):  
\_\_\_\_\_

2nd choice dates:  
\_\_\_\_\_

Names and emails of participating teachers:  
\_\_\_\_\_  
\_\_\_\_\_  
\_\_\_\_\_  
\_\_\_\_\_  
\_\_\_\_\_  
\_\_\_\_\_  
\_\_\_\_\_



**HANNIBAL SQUARE**  
**Heritage Center**

642 W. New England Ave.  
Winter Park, Florida 32789  
Tel 407-539-2680  
hannibalsquareheritagecenter.org

Send to: Jan Hurt, Registrar

Email: [Jhurt@crealde.org](mailto:Jhurt@crealde.org)

Phone: 321-203-2604

Fax: 407-671-0311