

THE LAS VEGAS PROJECT IN HISTORIC NEW MEXICO

Documentary Photography Master Class

with Peter Schreyer



Winter/Spring: Tuesdays, 7-9pm

Starting: January 19, 2021

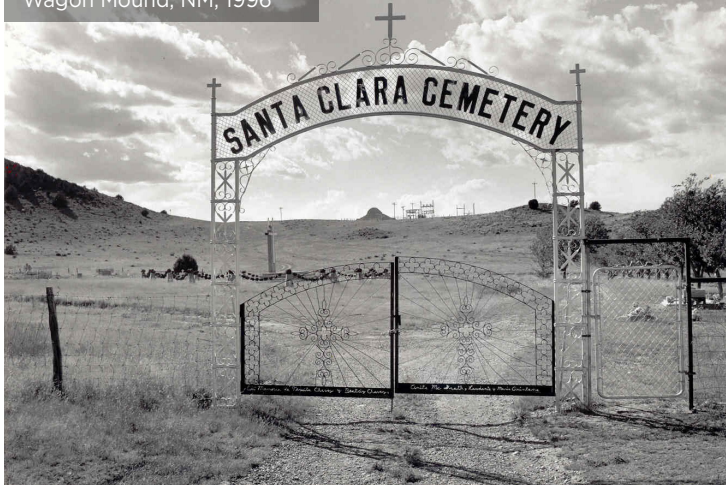
Location: Main Campus, Studio 3

Members: \$450 | **Non:** \$470

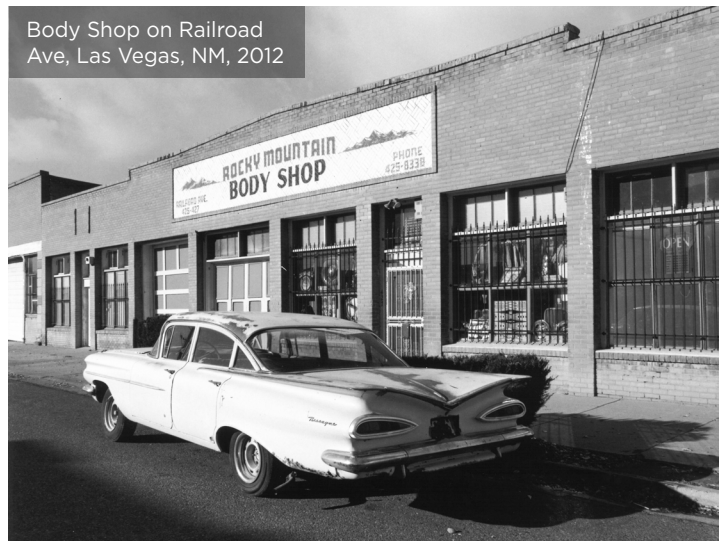
Advanced-level students will learn to photograph with a purpose, creating meaningful photographs to enjoy today and to be preserved for the future. Participants will be introduced to the history and techniques of the classic style of documentary photography, reviewing works from the masters. While creating a cohesive group project, students will learn about project development, research, implementation, caption writing and finishing a body of work for exhibition.

This 12-session premium course is for digital and film photographers with a skill level to produce exhibition quality prints under the instructor's supervision. The first eight weeks of the class will be spent preparing participants for the week-long on-site documentary project in Las Vegas, New Mexico. The remaining four weeks will take place during the Crealdé spring session, editing photographs, selecting the final images, writing captions and oral histories, and preparing for the exhibition. Use of the darkroom and digital print lab is included in the course tuition.

Cemetery on Santa Fe Trail,
Wagon Mound, NM, 1996



Body Shop on Railroad
Ave, Las Vegas, NM, 2012



Please contact Peter Schreyer at 407-797-5168 or pschreyer@crealde.org prior to signing up for the class. Registration for this special program will start on October 1 and interested parties must register via phone or in person with Crealdé Registrar Laura McBryde at 407-671-1886.

THE LAS VEGAS PROJECT

The Photographic Tour

March 10-17, 2021

Contemporary Life on the Historic Santa Fe Trail in New Mexico

Not to be confused with the famed gambling town in Nevada – Las Vegas in the state of New Mexico, is an historic city, founded through a land grant from the Mexican government in 1835. It is located at the foot of the beautiful Sangre de Cristo Mountains, near the final destination of the Santa Fe Trail, an important 19th century wagon route that brought settlers and commerce to the Southwest, connecting the region's Native and Spanish cultures with the American East coast and Europe. Mostly still undiscovered by mass tourism, the city of Las Vegas, has over 900 buildings and five districts on the National Register of Historic Places and is surrounded by Native pueblos, interesting small towns and countless historic sites.

The original city design resembled a traditional Spanish layout around a central plaza – which still exists today! After the arrival of the railroad in the 1880s, the city boomed and a new community was planned, built in a Victorian, more American style, located one mile from the old town, which would quickly make Las Vegas one of the largest cities in the Southwest. These distinctly different styles of two communities within one city survive until today, creating endless photographic opportunities. By the 1950s and the restructuring of the railroad industry, Las Vegas stopped growing, preserving a uniquely strong and intact architectural and cultural character.

During spring break of 2021, eight Crealdé students under the guidance of seasoned documentary photographer Peter Schreyer will capture, in black and white film and digital, the stories of the places and people of this unique American region, illustrating their cultural heritage and historical roots that go back hundreds of years. This program will be built on the instructor's deep knowledge of the Southwest, 35 years of conducting photographic tours and the successful Crealdé masterclass documentaries that produced traveling exhibitions for St. Augustine at 450 in 2015 and The Lake: A Documentary Exploring the Land and People of Lake Apopka in 2017.

Photographic Topics and Opportunities

- Environmental portraits and collections of oral histories of long-time residents and business owners
- Interior and exterior architectural photography of historic hotels and businesses
- Night photography sessions, including the traditional Spanish plaza across from our hotel, where in 1846, during the Spanish American War, the American annexation of New Mexico was declared
- Railway operations, education and local commerce
- Contemporary assets, challenges and outlook towards the future for the community

Special Excursions and Explorations

- The former ghost and mining towns on the picturesque Turquoise Trail
- Fort Union National Monument, an important supply fort on the Santa Fe Trail
- Scenic Mora Valley with its old Spanish villages, farms and roller mills
- Mysterious Pecos Pueblo National Historical Park
- Visit to photographic archives and collections in beautiful Santa Fe, New Mexico's capital city
- Hiking through the area's fabulous canyon landscape

What's Included

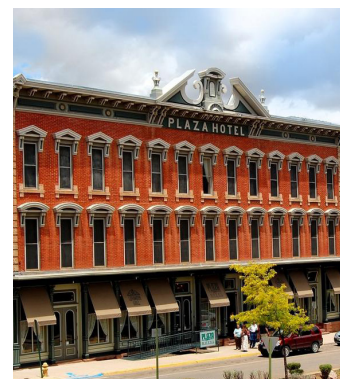
- 7 nights of deluxe accommodations at the beautiful Victorian Plaza Hotel in Las Vegas (large rooms with two beds).
- Ground transportation via private, air-conditioned rental van.
- Two special group dinners & breakfast every day.
- All local transfers, excursions & admissions as mentioned in the program.
- Trip & equipment preparation meeting prior to the trip.
- Photographic and logistical guidance and instruction throughout the trip.
- Limited to eight participants to ensure maximum comfort & personal attention.

Double occupancy:
\$2,250 Members | \$2,295 Non

Single occupancy:
\$2,700 Members | \$2,745 Non

Our Hotel and Photographic Tour Headquarters

Presiding over the historic plaza since its construction in 1882, the Plaza Hotel, in Las Vegas, NM, has a rich history including many famous and infamous guests, including outlaws, presidents and Hollywood stars. In addition to being featured in many Western films, the hotel was honored with a \$5 million renovation in 2007, including the addition of the historic Charles Ilfeld department store building next door. Today, it features beautiful historic rooms with modern amenities overlooking the plaza, a restaurant and a classic western bar. The Plaza is a member of the Historic Hotels of America, which has been recognized by the National Trust for Historic Preservation to celebrate the finest historic hotels across America.



THE SANTA FE DETOUR

You shouldn't leave NM without seeing Santa Fe and Taos.
Consider joining us for this optional tour extension!

A 3-Day Tour Of Northern New Mexico

Santuario de Chimayo,
NM, 2017



Crealdé Student Ann
Carreon at the Santa Fe
Trail, Fort Union, NM, 2019



Tentative Tour Itinerary

March 17-20, 2021

Wednesday, March 17: Morning drop off of part of our group at Albuquerque's airport. On our way to Santa Fe, we enjoy a visit to Kasha-Katuwe Tent Rocks National Monument. Located on Native American land, our photo-hike will take us through a series of box canyons, eventually leading to a high plateau that will provide a spectacular 360 degree view of the surrounding natural landscape. Mid-afternoon check-in at the fabulous 4-star rated and historic LA FONDA HOTEL, the "Inn at the End of the Trail". Our excursion headquarters for the next three days is centrally located on the picturesque town plaza with its world class museums, galleries and restaurants.

Thursday, March 18: Mid-morning departure for our excursion on the scenic High Road to Taos. Stops will include historic churches, 18th century Spanish villages and the pilgrimage town of Chimayo, where we will enjoy lunch at the classic Rancho de Chimayo Restaurant. Afternoon visit to the high elevation town of Taos, known for its vibrant artist community, beautiful mountain backdrop and the impressive Rio Grande Gorge.

Friday, March 19: Enjoy a free morning in Santa Fe, with its renowned Indian Market and great museums. Afternoon excursion to the mountains around Los Alamos to Bandelier National Monument with its dramatic canyons and pre-Columbian cliff dwellings - spectacular for hiking and photography! Farewell dinner at the La Fonda's beautiful La Plazuela Restaurant.

Saturday, March 20: Say good-bye to beautiful Santa Fe and depart for Albuquerque to catch our afternoon return flights home to Orlando. End of guided tour.

Note: The itinerary is subject to change, as final arrangements are currently being made, allowing for minimal changes to tour content and hotel accommodations.

What's Included

- Three nights at the fabulous La Fonda Hotel in Santa Fe, the tour guide's favorite hotel in the West
- Ground transportation via private rental van
- Group lunch at Rancho de Chimayo and farewell dinner at the La Plazuela Restaurant in Santa Fe

Double occupancy: \$750 Members | \$775 Non-Members
Single occupancy: \$1,050 Members | \$1,075 Non-Members

Reservations & Refunds

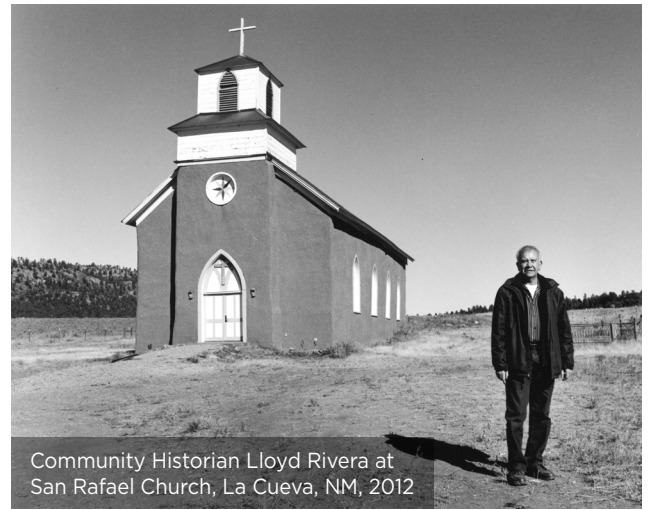
Participants must arrange for their own transportation to Albuquerque, with the opportunity to extend their stay at the beginning or at the end of the photographic tour. Several airlines operate convenient morning flights from Orlando, including Southwest Airlines, which offers non-stop service. Registrations will be taken between October 1 and December 1, 2020. To reserve your space, a deposit of \$1,000 is due upon registration or no later than December 1, 2019, with the full balance due by February 1, 2021. Tour price is based on double occupancy with participants sharing a room with two beds. Single travelers should contact Peter Schreyer prior to registering to discuss rooming options. A cancellation penalty of \$500 will apply until December 1, 2020; \$1,000 from December 2, 2020 through February 1, 2021. Refunds cannot be granted after February 1, 2021. Full payment for the optional Santa Fe Detour is due December 1, 2020 (fully refundable until February 1, 2021.) Private travel insurance is recommended.

Crealdé School of Art is offering this special program in conjunction with Peter Schreyer Photographic Tours. For more information, please contact Peter Schreyer at 407-797-5168 or pschreyer@crealde.org.

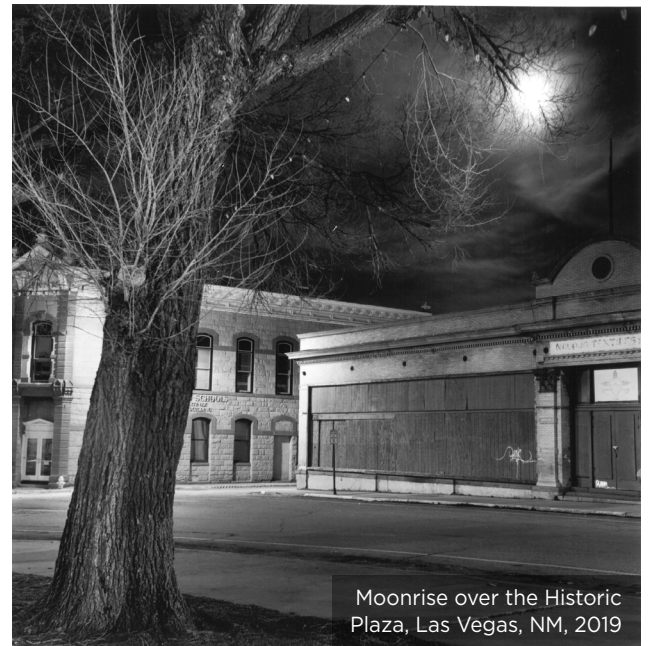
THE LAS VEGAS PROJECT

The Exhibition

- The finished project will be shown in an inaugural, two-month long exhibition in early 2022 at Crealdé's Showalter Hughes Community Gallery
- Each participant will have the opportunity to have a minimum of three photographs included in the exhibition
- Photographers are responsible for the matting and framing cost of each of their included images (approx. \$100 per photograph)
- Crealdé will publish a catalogue of the travelling exhibition (subject to grant funding)
- The exhibition will travel to Las Vegas for an on-site showing of the completed project
- For future preservation, the instructor will work towards a potential donation of a second, un-framed exhibition set to a local archive or museum in New Mexico



Community Historian Lloyd Rivera at San Rafael Church, La Cueva, NM, 2012



Moonrise over the Historic Plaza, Las Vegas, NM, 2019



Among the Redwood Trees, CA - 2018

Your Tour Guide, Peter Schreyer

Crealdé's Executive Director and internationally exhibited photographer Peter Schreyer is known for his award-winning documentary projects that celebrate the history and heritage of communities in a contemporary context. He has received numerous grants and acclamations for his work, including a Fellowship in Visual Arts from the State of Florida and most recently, a portfolio of his Central Florida archival photographs was purchased for the prestigious Alford Collection of Contemporary Art at the Cornell Fine Arts Museum in Winter Park.

Over the past three decades, the Swiss-born educator has crafted photographic tours to Europe and the American West that appeal to cultural travelers and photographers of all skill levels. He has traveled and photographed in New Mexico more extensively than anywhere else in the West.

EST
'75

crealde.org

Main Campus

600 St. Andrews Blvd.
Winter Park, FL 32792
p 407.671.1886

Hannibal Square Heritage Center

642 W. New England Ave.
Winter Park, FL 32789
p 407.539.2680

Jessie Brock Community Center

310 N Dillard St.
Winter Garden, FL 34787
p 407.656.4155